

15
ANNUAL
WHOLESALE
OFFERS OF



Duplicate
9th Year
1893-94.

Native North American Ornamental Plants

Especially of the
Carolina Mountains.



HARLAN P. KELSEY

HIGHLANDS NURSERY,
Linville, North Carolina,
U. S. A.



A NATIVE NORTH CAROLINIAN.

Ninth Year.

PLEASE OBSERVE:



Always use the enclosed Order Sheet.

Prices herein abrogate all previous quotations.

Packing and delivery at our depot, Cranberry, N. C., free.

Terms: All bills due first of each month. Interest charged thereafter.

Discounts.—Special for cash with order, 5 per cent. On orders of \$25, 5 per cent.; \$50, 7 per cent.; \$100, 10 per cent.; \$200, 15 per cent.; \$500, 20 per cent. Five plants of a kind at 10 rates, 25 at 100 rates, 500 at 1,000 rates.

Foreign remittances. Send by **International P. O. Money-Order** drawn on Asheville, N. C., by **New York Exchange**, or by **Cheque Bank Check**.

Claims made immediately on receipt of goods will meet with prompt recognition, and be adjusted, if our error. All shipments travel at **consignee's risk**.

"Collected plants" are those carefully lifted from open woods, and usually trimmed before shipping. Our true line is in furnishing strong, **nursery-grown** stock, but to meet a demand for very **cheap stock**, we have carefully prepared a schedule of prices, and a glance shows the price of each plant, **collected or nursery-grown**. Please order accordingly.

We ship usually from October 1 to December 1, and from March 1 to May 1. Often all through the winter, if mild. (**Please order early.**)

Our shipments extend over this country and the principal countries of Europe, and our packing is nearly perfect.

Large Frost-Proof Cellar, Packing House and **Sheds** facilitate prompt shipments, especially in winter, and I would ask my customers to bear this advantage in mind.

Please write us about anything—our mountains, climate, or the World's Fair, but especially about **plants, native plants**, and we may interest you. Our facilities are broad and territory large. And remember, we are the largest growers and collectors of **Hardy Native Ornamentals exclusively in America**.

Soil, Planting and Care of Native Plants.

The Azaleas, Rhododendrons, and most other plants herein named are hardy generally throughout the United States, and with proper care in preparation of soil and planting may be grown *successfully*. They thrive best in rich, peaty soils and partially shaded situations. **A good soil can be made** by excavating two to three feet of the surface, and filling with equal parts of good leaf-mold or other decayed vegetable matter and surface loam, with one-tenth or more of sharp sand. Swamp muck or field sod may be used. Mulching (spent tan, moss, leaves, hay, etc.) is always useful, and is necessary where the ground is very dry. Lime, in large quantities, any form, is fatal to Rhododendrons, Azaleas, and ericaceous plants in general. As a rule, give all plants a deep soil, with plenty of well-decayed vegetable food and good drainage, and the results will be satisfactory.

Our Location,

At the summit of the Carolina mountains, 3,800 feet towards the clouds, and under the shadow of the great Grandfather mountain, insures long, cool summers and moderate winters, which is very favorable to the growth of these beautiful native ornamentals, and produces a **hardy stock—an important point with Northern planters**.

For years the Highlands Nursery has been growing and pushing forward **native plants exclusively**, and it is extremely gratifying to us to be made aware of the rapidly-increasing demand for them, especially in our own country, showing as it does that a worthy home product is appreciated by Americans. Constant additions are being made to our already large and varied stock, and our endeavor is that none excel us.



Copyrighted 1893, by Harlan P. Kelsey.

CAROLINA WILD FLOWERS. (From Photograph.)

LILIUM GRAYI, RHODODENDRON, FERNS, OXALIS, and others.

SOME BEAUTIFUL AMERICAN PLANTS. HIGHLANDS NURSERY.



RHODODENDRON MAXIMUM. (See page 16.)

SOME BEAUTIFUL AMERICAN PLANTS. HIGHLANDS NURSERY.

ERRATA.

By an inexcusable blunder on the part of the Printer (who sorrowfully admits he DID know better), the legends under the cuts of Kalmia and Rhododendron on pages 5 and 7 of our current wholesale catalogue were transposed. Please so regard them, and do not blame *us* with the error.





Copyrighted 1893, by Harlan P. Kelsey.

KALMIA LATIFOLIA (Mountain Laurel).
(From Photograph.)

SOME BEAUTIFUL AMERICAN PLANTS. HIGHLANDS NURSERY.



Copyright. Garden & Forest Pub. Co.

RHODODENDRON VASEYI. 8 to 15 feet high. (See page 20.)

Beautiful new deciduous Rhododendron, introduced by us. Profuse and very early bloomer, through all shades of pink. Invaluable addition for lawn, park, garden and cemetery.

Nurserymen and florists should all catalogue this fine new Rhododendron, and at the prices we offer it, no one need be without it. Large quantities supplied at special rates.

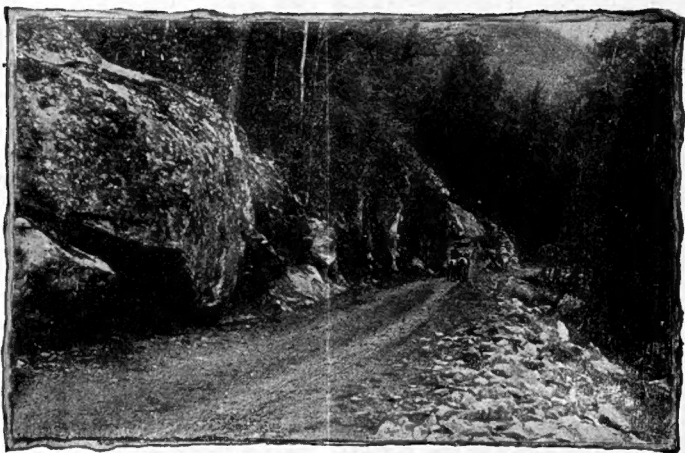
SOME BEAUTIFUL AMERICAN PLANTS. HIGHLANDS NURSERY.



Copyrighted 1893, by Harlan P. Kelsey.

MASS OF GREAT LAUREL (*Rhododendron maximum*).
(From Photograph.)

SOME BEAUTIFUL AMERICAN PLANTS. HIGHLANDS NURSERY.



A BIT OF NATURE'S LANDSCAPE GARDENING.

Hardy American Trees, Deciduous.

For Park, Lawn, Cemetery, Nursery, Street.

"In the Weekly Tribune, Mr. Jostah Hoopes takes strong grounds in favor of native American trees, on the ground that they are less liable to disease in our climate, longer lived, and more beautiful and useful as a class than their foreign relatives."—SENEX.

ACER. (Maple.)

These, among the finest of all street and shade trees, need no general recommendation, as the enormous numbers that are planted yearly bespeak their own landscape value and popularity.

Varieties.	SIZE AND GRADE.	PRICES.		
		10	100	1,000
Acer Pennsylvanicum (Striped Maple). 13 to 15 ft. Beautiful striped bark and conspicuous lobed foliage, turning bright yellow; very graceful.	6 to 12 in.	\$0 50	\$4 00	\$35 00
	1 to 2 ft.	* 30	2 50	20 00
Acer rubrum (Red Maple). 40 to 60 ft. Bright red blossoms and fruit in spring; brilliant autumn coloring.	2 to 4 ft.	75	6 00	
	9 to 18 in.	1 25	10 00	
Acer saccharinum (Sugar Maple). 50 to 75 ft. Stately pyramidal growth.	3 to 4 ft.	50	4 00	
	6 to 12 in.	* 30	2 50	20 00
Acer spicatum (Mountain Maple). 10 to 30 ft. Soft, downy growth, and leaves conspicuous.	1 to 2 ft.	75	6 00	
	2 to 4 ft., heavy	1 50	30	2 50 20 00
Acer triloba (Pawpaw). 15 to 30 ft.	4 to 6 ft., ex. h'vy.	* 25	2 00	15 00
	6 to 12 in.	60	5 00	45 00
Asimina triloba (Pawpaw). 15 to 30 ft.	1 to 2 ft.	* 40	3 00	25 00
	4 to 12 in.	* 50	3 50	30 00
Andromeda arborea (Tree Andromeda). 20 to 40 ft. Exquisite lawn, park and cemetery tree. Long, paniced racemes of white, fragrant; graceful, brilliant autumn foliage.	1 to 2 ft.	* 75	5 00	40 00
	2 to 4 ft.	65	6 00	50 00
Amelanchier botryapium (Snowy Mespilus, Juneberry). 25 to 50 ft. Greatest profusion of snow-white blossoms in drooping racemes in earliest spring; one of the best for cemetery, lawn or park.	1 to 2 ft.	* 40	3 00	25 00
	2 to 4 ft.	1 00	8 00	
Esculus flava (Buckeye). 30 to 50 ft.	2 to 4 ft.	* 65	4 50	35 00
	3 to 5 ft., heavy	2 00	15 00	
Betula excelsa (Yellow Birch). 50 to 75 ft. Silvery bark. This and the next are very fine street and specimen lawn trees.	5 to 6 ft., heavy	* 1 25	10 00	75 00
	4 to 8 in.	75	5 00	40 00
	1 to 2 ft.	* 40	3 00	25 00
	6 to 12 in.	1 00	7 00	60 00
	1 to 2 ft.	* 65	4 50	35 00
	3 to 5 ft., heavy	1 50	12 00	100 00
	5 to 6 ft., heavy	2 00	15 00	
	4 to 8 in.	40	3 00	
	1 to 2 ft.	* 50	3 50	30 00
	6 to 12 in.	40	3 00	25 00
	1 to 3 ft.	* 25	2 00	15 00
	3 to 4 ft., heavy	75	5 00	40 00
	4 to 6 ft., heavy	* 50	3 50	30 00
	3 to 4 ft., heavy	1 25	10 00	
	4 to 6 ft., heavy	2 00	15 00	

(*) denotes COLLECTED plants.

Varieties.	SIZE AND GRADE.	PRICES.		
		10	100	1,000
DECIDUOUS TREES, continued.				
<i>Betula lenta</i> (Sweet Black Birch). 50 to 70 ft. Elegant, graceful growth.	6 to 12 in.	\$0 40	\$3 00	\$25 00
		* 25	2 00	15 00
	1 to 3 ft.	75	5 00	40 00
		* 50	3 50	30 00
	3 to 4 ft., heavy.	1 25	10 00	
<i>Castanea vesca</i> (American Sweet Chestnut). 40 to 80 ft.	4 to 6 ft., heavy.	2 00	15 00	
	1 to 2 ft.	* 75	5 00	
<i>Cercis Canadensis</i> (Red Bud). 15 to 20 ft. Broad, cordate leaves and reddish purple-clustered flowers.	6 to 12 in.	50		
	6 to 12 in.	60	4 00	32 00
<i>Cornus florida</i> (White-flowering Dogwood). 15 to 35 ft. (See illustration, page 12.)		* 30	2 50	20 00
	1 to 2 ft.	1 00	7 00	60 00
		* 50	3 50	30 00
	2 to 3 ft., heavy.	1 25	10 00	
		* 65	4 50	
<i>Cornus alternifolia</i> (Blue Dogwood). 15 to 35 ft. Distinct and picturesque.	3 to 4 ft., heavy.	2 00	15 00	
	6 to 12 in.	75	5 00	
		* 65	4 50	35 00
	1 to 2 ft.	1 00	7 00	
		* 75	5 00	
<i>Crataegus Crus-Galli</i> (Cockspur Thorn). 10 to 25 ft. Covered with snow-white flowers and red fruit.	2 to 3 ft.	1 50		
	3 to 5 ft.	2 50		
	1 to 2 ft.	75	5 00	
<i>Diospyros Virginiana</i> (Persimmon). 15 to 60 ft.		* 50	3 50	
	1 to 2 ft.	* 65	4 50	35 00
<i>Fagus ferruginea</i> (American Beech). 40 to 70 ft.	1 to 2 ft.	1 00		
		* 40	3 00	25 00
		75	6 00	50 00
		* 50	4 50	30 00
	2 to 3 ft.	1 00	7 00	
<i>Fraxinus Americana</i> (White Ash).	3 to 4 ft.	1 50		
	9 to 18 in.	75	5 00	40 00
	18 to 36 in.	1 25	10 00	
	3 to 4 ft., extra.	2 00		
	4 to 6 ft., extra.	4 00		
<i>Halesia diptera</i> . 10 to 25 ft. Rare and showy; fruit two-winged.	6 to 12 in.	2 00		
	12 to 18 in.	3 00		
	6 to 12 in.	50	3 50	30 00
<i>Ilex monticola</i> (Deciduous Mountain Holly). 15 to 30 ft. Bright red berries in perfect rows in fall and early winter.		* 25	2 00	15 00
	1 to 2 ft.	75	5 00	40 00
		* 50	3 50	30 00
	2 to 3 ft., extra.	1 25	10 00	
	3 to 4 ft.	2 00		
<i>Liquidambar styraciflua</i> (Sweet Gum). 30 to 60 ft. Leaves deep crimson in autumn.	2 to 4 ft.	2 00		
	1 to 2 ft.	40	3 00	25 00
<i>Liriodendron tulipifera</i> (Tulip Tree). 60 to 80 ft. Well-known, rapid-growing street and specimen lawn tree. Yellow flowers, 3 inches across.	2 to 3 ft.	65	4 50	
	3 to 4 ft.	75	5 00	
	4 to 6 ft.	1 00	8 00	65 00
	6 to 8 ft.	2 00	18 00	

(*) denotes COLLECTED plants.

MAGNOLIA.

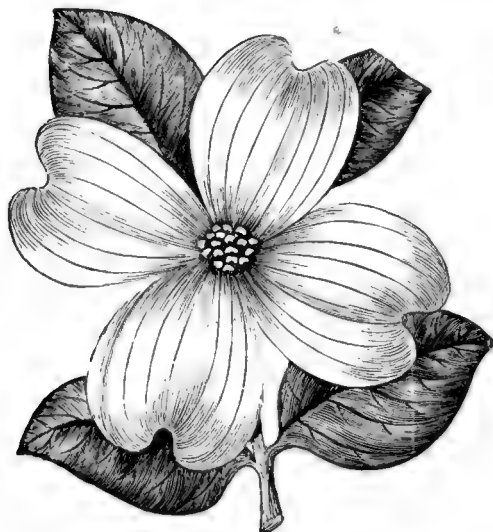
The Magnolias must be classed among the most effective of all ornamentals, combining as they do, rapid, clean growth with the handsomest of large foliage and great wax-like flowers, usually overcharged with a peculiar and exquisite odor, and later on with a

DECIDUOUS TREES, continued.

covering of brilliant scarlet cucumber-shaped fruit. For scenic effect our native species will bear favorably a critical comparison with the finest foreign ones, while to the *American planter* they possess the overwhelming advantage of being an indigenous growth, free from disease, and (with the exception of the *Grandiflora*) hardy throughout the states.

Varieties.	SIZE AND GRADE.	PRICES.		
		10	100	1,000
Magnolia acuminata (Cucumber Tree). 50 to 70 ft. Beautiful, ornamental.	6 to 12 in.	\$1 00	\$7 00	
	1 to 2 ft.	* 50	3 50	\$30 00
	2 to 4 ft., extra . . .	2 50		
Magnolia Frazeri (Ear-leaved Magnolia). 40 to 50 ft. <i>Rare</i> , and one of the most beautiful of all the Magnolias. Large leaves and flowers, the latter 6 inches across.	6 to 12 in.	75	5 00	40 00
	1 to 2 ft.	* 50	3 50	30 00
	2 to 4 ft., extra . . .	2 50		
Magnolia glauca (Sweet Bay). See Evergreens.				
<i>grandiflora</i> . See under Evergreens.				
<i>Umbrella</i> (Umbrella Tree). 25 to 35 ft. Leaves 18 to 20 inches long; flowers 7 to 8 inches broad. This Magnolia has an unpleasant odor.	1 to 2 ft.	1 00		
	2 to 3 ft.	2 00		
	3 to 4 ft.	3 00		
Ostrya Virginica (Hop Hornbeam). 15 to 30 ft. Very hard wood; hop-like fruit and showy, serrate foliage.	1 to 2 ft.	1 00		
	2 to 3 ft.	* 50	3 50	30 00
Pyrus coronaria (Wild Crab-Apple). 10 to 25 ft. Fragrant native tree. White and pink flowers.	1 to 2 ft.	* 75	5 00	40 00
	6 to 12 in.	1 00		
Pyrus Americana (American Mt. Ash). 12 to 24 ft. Beautiful cut foliage and brilliant red fruit.	1 to 3 ft.	* 50	3 50	30 00
		2 00		
		* 65	4 50	
Prunus Pennsylvanica (Peruvian Bark). 10 to 35 ft. Exceedingly rapid growth for quick effect, but very short-lived—20 to 35 years.	1 to 2 ft.	* 40	3 00	20 00
	2 to 3 ft.	* 50	3 50	30 00
Prunus serotina (Wild Black Crab). 60 to 80 ft. This is peculiarly adapted to street and shade purposes, making clean, strong growth and dense, dark foliage.	1 to 2 ft.	*1 00	7 00	
	2 to 4 ft.	3 50		
		*2 00	15 00	
Robinia pseudacacia (Yellow or Black Locust). 30 to 75 ft. Delicious fragrant clusters of pure white flowers and finely divided leaves. Beautiful lawn tree.	1 to 2 ft.	1 00		
	2 to 3 ft.	1 50		
Rhus cotinoides (Chittam Wood). 30 to 40 ft. A valuable new and rare native. Blue-green leaves. \$1 each.	Large.	8 00	70 00	
Rhus cotinus (Smoke Tree). 10 to 20 ft. <i>Not a native</i> .	1 to 2 ft.	2 50		
Salix nigra (Black Willow). 15 to 50 ft.	Cuttings.	* 25	1 00	8 00
<i>discolor</i> (Pussy Willow). 8 to 15 ft. Good for damp ground.	Cuttings.	* 25	1 00	8 00
	1 to 2 ft.	*1 00	7 00	
Sassafras officinale (Sassafras). 15 to 45 ft.	1 to 2 ft.	* 50	3 50	30 00
Symplocos tinctoria (Sweet-leaf). 8 to 15 ft. Yellow clustered flowers and shiny, <i>sweet</i> leaves. A valuable small tree.	1 to 2 ft.	1 25		
	2 to 3 ft.	* 65	4 50	35 00
		2 00		
		*1 00	7 00	60 00
Tilia Americana (American Linden). 50 to 80 ft.	1 to 2 ft.	*1 00	7 00	

(*) denotes COLLECTED plants.



CORNUS FLORIDA (*White-flowering Dogwood*).
(See page 10.)



CALYCANTHUS GLAUCUS.
(See page 19.)

Hardy Evergreen Trees.

As a class, our Native American Evergreens are without doubt far beyond comparison with those of foreign countries, possessing unrivaled characteristics of gracefulness, grandeur or color. Our Alleghany region, while claiming possibly fewer species than the Western and Pacific states, is yet rich in beautiful forms, and we can boast of at least one distinct new species of conifer, found nowhere else, and here only very locally, namely, the Carolina Hemlock (*Tsuga Caroliniana*). Below we give a short description of each in proper order:

Varieties.	SIZE AND GRADE.	PRICES.		
		10	100	1,000
Abies Fraseri (Southern Balsam-Fir). 30 to 65 ft. Rather smaller than the northern Balsam, with denser foliage and more compact growth. A large stock of this beautiful Fir at specially low rates.	3 to 6 in.	\$0 40	\$3 00	
	4 to 12 in.	* 30	2 50	\$15 00
	6 to 12 in.	50	3 50	30 00
		* 40	3 00	20 00
	1 to 2 ft., extra. .	1 00	7 00	55 00
Gordonia lasianthus (Loblolly Bay). 30 to 50 ft. Large white flowers, 2 to 3 inches across, and glossy leaves. <i>Not perfectly hardy.</i>		* 75	5 00	40 00
	2 to 3 ft., extra. .	2 00	14 00	125 00
	4 to 8 in.	1 50		

(*) denotes COLLECTED plants.

ILEX OPACA (American Holly).

This is without doubt one of the most beautiful and indispensable of all evergreens in landscape work. The growth is thick and heavy, assuming a dense, picturesque, cone shape, while the sharp, prickly foliage is always in most beautiful contrast to the surrounding leafage or the winter aspect of lawn and park, and forms a conspicuous background for the brilliant scarlet berries which cover it in fall and early winter. This beautiful Holly is *always in demand*, and I would call the special attention of all nurserymen and planters to our heavy stock of fine plants.

Varieties.	SIZE AND GRADE.	PRICES.		
		10	100	1,000
HARDY EVERGREEN TREES, continued.				
Ilex opaca (American Holly). 15 to 40 ft.	6 to 9 in.	\$0 75	\$5 00	\$40 00
	9 to 12 in.	1 00	7 00	60 00
	1 to 1½ ft., extra.	2 50	20 00	
	4 to 12 in.	* 50	3 50	30 00
	4 to 8 in.	2 00		
Ilex Cassine (Yaupon). 10 to 15 ft. This rare species comes from the coast of Carolina, and may not be perfectly hardy all over the North, though it will stand zero weather without apparent injury. It is, however, an elegant shrub or small tree, with small, smooth, crenate or scalloped leaves.		*1 00	7 00	60 00
Juniperus Virginiana (Red Cedar). 15 to 35 ft. A useful small ornamental, the foliage varying often from a stiff needle-shape to light and feathery.	1 to 2 ft.	* 65	4 50	
	2 to 3 ft.	1 50		
Magnolia glauca (Sweet Bay). 12 to 30 ft. One of the finest in foliage and flower; latter 2 to 3 inches across, and of peculiar, sweet fragrance.	4 to 12 in.	1 00	7 00	
		* 50	3 50	30 00
	1 to 2 ft., fine.	2 00	15 00	
Magnolia grandiflora (Great Southern Magnolia). 50 to 90 ft. Thick, leathery leaves 6 to 10 inches long, and large, broad, very fragrant flowers, 6 to 8 inches broad.		*1 00	7 00	60 00
	2 to 3 ft., heavy.	3 50		
Olea Americana (Olive). 8 to 25 ft. From Florida; nearly hardy. Clusters of white, fragrant flowers. Purple fruit.		*1 50	12 00	
	1 to 2 ft.	3 00	25 00	
Picea nigra (Black Spruce). 50 to 75 ft. Thick, heavy growth and dark foliage.	2 to 3 ft.	5 00	45 00	
	4 to 8 in.	1 25		
Pinus pungens (Table-Mountain Pine). 20 to 50 ft. Of peculiar growth, the cones remaining on for years, giving the tree a unique appearance.	3 to 6 in.	* 20	1 00	8 00
	6 to 12 in.	40	3 00	25 00
Pinus Strobus (White Pine). 50 to 150 ft. This grand Pine needs no extended description here. In delicate <i>silvery foliage</i> and clean, rapid growth it is unsurpassed by any known conifer.		* 25	2 00	15 00
	1 to 2 ft.	75	5 00	40 00
Pinus strobus (White Pine). 50 to 150 ft. This grand Pine needs no extended description here. In delicate <i>silvery foliage</i> and clean, rapid growth it is unsurpassed by any known conifer.		* 50	3 50	30 00
	2 to 3 ft.	*1 25	10 00	75 00

(*) denotes COLLECTED plants.

Varieties.	SIZE AND GRADE.	PRICES.		
		10 "	100	1,000
HARDY EVERGREEN TREES, continued.				
Pinus australis (Long-leaf Yellow Pine). 60 to 75 ft. The well known timber and tar Pine of the lower Southern states. The small plants present a most surprisingly tropical appearance, with the light green, 15 to 20-inch long leaves of annual growth clustered <i>perpendicularly</i> on the ends of the shoots like a broom, and bearing a strikingly singular contrast to the leaves of the previous year's growth, which are dark green and droop gracefully <i>downward</i> .	6 to 12 in.	*\$2 00	\$15 00	
	1 to 2 ft.	* 3 00	25 00	
Pinus rigida (Black or Pitch Pine). 30 to 50 ft. The straggling growth of this Pine prevents its extensive use as an ornamental, though as a single lawn tree it is quite effective.	6 to 12 in.	* 75	5 00	\$40 00
Prunus Caroliniana (Cherry-Laurel). 20 to 30 ft. This much admired tree is quite commonly used in the South as a fine ornamental. The white flowers are profuse and showy, and present a fine effect, with the always pleasing aspect of the glossy, serrate leaves. As it is not perfectly hardy in our mountains, however, we cannot recommend its extensive planting north of lower Maryland.	3 to 6 in.	* 50	3 50	
	6 to 12 in.	* 50	3 50	
	1 to 2 ft.	* 65	4 50	
	1 to 2 ft.	* 75	5 00	
Tsuga Canadensis (Hemlock). 50 to 100 ft. Considered by eminent authorities to be the most beautiful of all American conifers; rich and delicate foliage, drooping branches and dense habit.	6 to 12 in.	* 50	3 50	
	1 to 2 ft.	* 1 00	7 00	15 00
	2 to 3 ft.	* 75	5 00	40 00
	3 to 4 ft.	1 50		
	3 to 4 ft.	3 00		
Tsuga Caroliniana (Carolina Hemlock). 40 to 50 ft. This magnificent new Hemlock, introduced by us, we place without hesitation in the foremost rank as an ornamental. It possesses a <i>distinct pyramidal growth</i> , which, with its exceedingly dense, dark foliage and altogether graceful effect demand for it in landscape work a place that can be filled by no other of its class. While it is very difficult to transplant direct from its native habitat, cultivated stock removes very easily. A strong and fine but as yet limited supply on hand.	6 to 9 in.	* 2 50	20 00	
	9 to 12 in.	* 1 00	7 00	60 00
	1 to 1½, heavy.	* 3 50	30 00	
	1½ to 2½, extra.	* 1 25	10 00	75 00
	1½ to 2½, extra.	* 6 00		
		* 2 00	15 00	
		10 00		
		* 4 00	35 00	

(*) denotes COLLECTED plants.

Hardy Native Evergreen Shrubs.

Varieties here offered can be highly recommended for parks, lawns, cemeteries and all landscape work.

Varieties.	SIZE AND GRADE.	PRICES.		
		10	100	1,000
Andromeda polifolia. 10 to 12 in. Forms a compact mass 1 to 2 feet across and about 1 foot high. Flowers bell-shaped, flesh-colored.	5 to 12 in., extra.	\$1 25	\$10 00	
Arctostaphylos Uva-ursi (Bearberry). Pretty, thick-leaved, trailing shrub, the terminal racemes of white flowers producing red fruit.	3 to 6 in.	1 25	10 00	
Cassandra calyculata (Leather-Leaf). 1 to 3 ft. Leafy racemes of nodding flowers.	1 to 2 ft.	1 00	6 00	
Cyrilla racemiflora. 10 to 15 ft. This is a very ornamental shrub, though unfortunately not quite hardy. The small, white flowers grow on racemes 3 to 5 inches long. Leaves shiny and thick.	6 to 12 in.	75	5 00	\$40 00
Gaylussacia brachycera. 4 to 12 ft. A dense-growing shrub, the thick, glossy leaves producing a pleasing effect the year round.	6 to 12 in.	* 75	5 00	40 00
	1 to 2 ft.	*1 00	7 00	60 00
Hypericum aureum. 3 to 4 ft. Finest, possibly, of all this large family. Great golden flowers 2 inches across. Fine, large leaves and compact growth.	9 to 18 in.	1 50	12 00	
	18 to 30 in.	2 50	20 00	
Hypericum densiflorum. 3 to 5 ft. Compact bush, completely covered with masses of small, yellow flowers. July and August.	1 to 2 ft.	75	5 00	40 00
		* 30	2 50	20 00
	2 to 3 ft., extra. . .	1 00	7 00	
Kalmia latifolia (Mountain Laurel). 10 to 30 ft. One of the best of all shrub evergreens for park, cemetery, lawn and general landscape planting. Great clusters of white and rose flowers, setting off the dense, shiny green of the leaves. Stock very fine.	3 to 6 in.	50	3 50	30 00
	6 to 12 in.	75	5 00	40 00
		* 40	3 50	30 00
	12 to 18 in., heavy . .	1 00	7 00	60 00
		* 75	5 00	40 00
	18 to 24 in., extra . .	1 75	14 00	
Kalmia angustifolia. 1 to 3 ft. Small, deep rose-colored flowers in very early spring. A very valuable undershrub.	2 to 3½ ft., clumps. .	4 00	35 00	
	6 to 12 in.	75	5 00	
		* 30	2 50	20 00
Kalmia glauca (Pale Laurel). 1 to 2 ft. Flowers lilac-purple.	10 to 18 in., extra . .	1 00	7 00	
	1 to 2 ft.	1 00	7 00	
Kalmia hirsuta (Hairy Laurel, Wicky). 12 to 18 in. A hairy species from Florida.	4 to 12 in.	1 50		
		*1 00	6 00	50 00
Ledum latifolium (Labrador Tea). 2 to 5 ft. Handsome, white-clustered flowers. Deep green leaves covered with <i>rusty wool</i> underneath. Desirable.	6 to 12 in., extra . .	1 50	12 00	
Leiophyllum buxifolium (Sand Myrtle). 12 to 24 in. Very showy, bushy evergreen, the clusters of pure white flowers with pink stamens completely covering the plant. Blooms a long time.	4 to 8 in.	1 00		
		* 50	3 50	30 00

(*) denotes COLLECTED plants.

Varieties.	SIZE AND GRADE.	PRICES.			
		10	100	1,000	
EVERGREEN SHRUBS, continued.					
Leiophyllum buxifolium , var. <i>prostratum</i> (Mountain Heath). 4 to 15 ft. high. Our beautiful, hardy, high mountain variety of the east, with <i>prostrate habit</i> , making it one of the finest plants for rockwork in cultivation. This fine shrub cannot be too highly praised for all work of this kind, and its <i>Alpine habitat</i> insures its perfect hardiness, even in the extreme North. A fine stock on hand.	4 to 8 in.	\$0 75	\$5 00	\$40 00	
		* 25	2 00	15 00	
	8 to 12 in.	1 00	7 00		
		* 40	3 00	25 00	
Leucothoe Catesbaei . 3 to 10 ft. Very useful undershrub for massing, and without a ready substitute. Beautiful recurving sprays of green, often coloring beautifully.	6 to 12 in.	50	3 50	30 00	
		* 30	2 50	20 00	
Rhododendron Catawbiense (Large Purple Rhododendron). 10 to 15 ft. This is the great purple, strong-blooded Rhododendron, that is not only <i>planted the world over</i> for the grand effects of flower or foliage it affords, massed or singly, but is used as the parent stock for the majority of the beautiful Rhododendron hybrids that are so popular now, its color, vitality and hardiness placing it without a peer for this use. Blooms May and June.	1 to 2 ft.	75	5 00	40 00	
		* 40	3 00	25 00	
	3 to 6 in.	50	3 50	30 00	
		75	6 00	50 00	
	9 to 12 in., extra	1 10	8 00	65 00	
	12 to 18 in., heavy.	1 50	12 50		
	18 to 24 in., heavy.	2 50	20 00	150 00	
	6 to 12 in.	* 65	4 50	30 00	
Rhododendron maximum (Rose Bay. Great Laurel). 10 to 30 ft. A superb shrub or low tree, often 30 ft. high in our Southern mountains. Its large white or pink blossoms appear in large trusses in July, the latest of all the Rhododendrons—a quality which adds greatly to its value as a fine ornamental. Its dark green, broad foliage is the finest of all the species. Without doubt the noblest of all our native shrubs, and “absolutely hardy from Vermont to Georgia.” <i>Please notice</i> , we have on hand a fine stock of extra-size clumps of this noble shrub, which will give immediate effect. <i>Kindly order early.</i>	3 to 6 in.	50	3 50	30 00	
		6 to 9 in.	75	6 00	50 00
		6 to 9 in., heavy.	1 10	8 00	65 00
		12 to 18, ex. heavy.	1 50	12 50	
		18 to 24, ex. heavy.	2 50		
		2 to 3 ft., clumps.	6 00	50 00	
		3 to 4 ft., extra clumps.	15 00	140 00	
	6 to 12 in.	* 65	4 50	35 00	
Rhododendron punctatum (Small Pink Rhododendron). 6 to 10 ft. Very useful small species, the leaves and flowers <i>punctate</i> with small brown dots.	6 to 12 in.	1 50	12 00		
		* 75	5 00	40 00	
Rosa laevigata (Cherokee Rose). 10 to 20 ft. The beautiful evergreen, climbing Cherokee Rose of the South, but unluckily not hardy North.	1 to 2 ft.	3 00	25 00		
		* 1 00	7 00	60 00	
Vaccinium macrocarpum (Cranberry). 8 to 20 in.	9 to 18 in.	1 00	7 00		
		1 00	7 00		
	4 to 12 in.	* 50	2 00	8 00	

Hardy Native Deciduous Shrubs.

One of the most interesting and important features of our varied mountain flora is the large list of beautiful hardy shrubs, deciduous and evergreen, which are so lavishly placed for use within our easy reach, not, we trust, to undergo the ofttime blighting and prosaic effect of *taming*, but to come with all their own fresh, native, delicate tracery and

(*) denotes COLLECTED plants.



CHIONANTHUS VIRGINICA. (See page 19.)



CLETHRA ALNIFOLIA. (See page 19.)

tints of leaf and flower, lending (and at so little cost) that enchanting natural beauty to our garden architecture so sought after by all lovers of nature, and attained so rarely, though oftener more recently, by our best landscape professionals *through these means*.

I would not needlessly enumerate the long list of particularly desirable shrubs, but feel it is not out of place here to make special mention of a few which are exceptionally worthy the attention of every landscape gardener and park and cemetery official, as well as nurseryman and florist, in this country and abroad: The AZALEAS, with their masses of brilliant, pure colors and delightful fragrance; the ANDROMEDAS and LEUCOTHOES, fringed with their panicles of tinted bell-flowers; the dense-foliaged CALYCANTHUS, whose abundant, chocolate-colored flowers emit such a peculiar, fruity odor; the STUARTIAS, covered with large, showy flowers—the “native American Camellia;” VIBURNUMS, the large leaves coloring so richly at first hint of autumn; the CHIONANTHUS, drooping its delicate, white, fringe-like racemes, overcharged with a wild perfume; and the little hardy XANTHORHIZA, its peculiar, modest brown flowers in pendulous racemes below the conspicuous pinnate leaves, which color a bright orange in autumn.

The RHODODENDRONS and KALMIAS, however, might well claim the lead in shrub ornamentals, combining, as they do, the dark, broad, evergreen foliage with their profuse trusses of brilliant-stamened flowers. Massed or singly, they possess at all seasons a special charm of their own, and we know of no ornamentals, native or exotic, that can

take their well-earned place in gardening. For yellow effects we might name the *HYPERICUMS*, *DIERVILLAS* and *HAMAMELIS*, but will cut short the list and give a brief description of each in order.

Varieties.	SIZE AND GRADE.	PRICES.		
		10	100	1,000
<i>Alnus viridis</i> (Mountain Alder). 4 to 12 ft. The Alders are valuable undershrubs for their thick growth, dark, serrate foliage and bright, winged fruit.	1 to 2 ft.	*\$0 40	\$3 00	\$20 00
<i>Alnus serrulata</i> (Common Alder). 6 to 12 ft.	1 to 2 ft.	* 40	3 00	20 00
<i>Amelanchier rotundifolia</i> (Dwarf Juneberry). 1 to 3 ft. Fine, showy white flowers and edible fruit.	1 to 2 ft.	* 75	5 00	40 00
<i>Andromeda ligustrina</i> . 4 to 12 ft. White panicles; ash-gray bark.	1 to 2 ft.	* 40	3 50	25 00
<i>Andromeda racemosa</i> . 4 to 10 ft. Conspicuous; much used in planting shrubberies.	1 to 2 ft.	75	5 00	
<i>Andromeda Marianna</i> . 2 to 4 ft. One of the finest of the <i>Andromedas</i> . The leaves turn a deep red in fall.	6 to 12 ft.	* 75	5 00	20 00
<i>Andromeda recurva</i> . See <i>Leucothæ recurva</i> .	6 to 12 in.	75	5 00	40 00
" <i>Catesbæi</i> . See <i>Leucothæ Catesbæi</i> . Evergreen.				
<i>Aralia spinosa</i> (Prickly Ash). 10 to 15 ft. Large, compound leaves, crowded at the summit of stem like a Palm.	1 to 3 ft.	* 1 50	12 00	
<i>Arundinaria tecta</i> (Reed). 2 to 10 ft. A pretty, Bamboo-like plant.	6 to 12 in.	* 40	3 00	20 00
<i>Azalea arborescens</i> (Smooth Sweet Azalea). 4 to 12 ft. Very valuable for lawn, cemetery and park. Large, deliciously fragrant flowers, white or rose-tinged, set off by brilliant scarlet stamens; foliage dark and shiny. This is an invaluable shrub, and one of our best native plants for the lawn. A very fine stock on hand.	1 to 2 ft.	* 75	5 00	40 00
	6 to 12 in.	* 75	5 00	40 00
	12 to 18 in.	* 40	3 00	25 00
	18 to 24, extra.	* 1 25	10 00	75 00
		* 75	5 00	40 00
		* 2 00	15 00	
		* 1 00	7 00	60 00
<i>Azalea calendulacea</i> (Great Flame-colored Azalea). 5 to 15 ft. This is truly a magnificent shrub, and the showiest of the species. Invaluable for all situations. Shades from light straw and orange to brilliant crimson.	6 to 12 in.	75	5 00	40 00
	1 to 2 ft.	* 40	3 00	25 00
	2 to 3 ft.	* 1 00	8 00	60 00
		* 50	3 50	30 00
		* 2 00		
		* 75	5 00	40 00
<i>Azalea nudiflora</i> (Early Purple Azalea). 2 to 6 ft. Showy; very early bloomer.	6 to 12 in.	* 50	3 50	30 00
	12 to 18 in.	* 30	2 50	20 00
		* 75	5 00	40 00
		* 40	3 00	25 00
<i>Azalea viscosa</i> (Small White Azalea). 1 to 8 ft. Valuable undershrub. Flowers white; fragrant.	6 to 12 in.	* 50	3 50	30 00
	1 to 2 ft.	* 30	2 50	20 00
		* 75	5 00	40 00
		* 40	3 00	25 00
<i>Azalea Vaseyi</i> . See <i>Rhododendron Vaseyi</i> .				
<i>Berberis Canadensis</i> (American Barberry). 1 to 3 ft. Very small shrub, with yellow flowers in drooping racemes, and showy red berries. A fine ornamental.	6 to 9 in.	50	3 50	30 00
	9 to 18 in., fine.	1 00	7 00	

(*) denotes COLLECTED plants.

Varieties.	SIZE AND GRADE.	PRICES.		
		10	100	1,000
DECIDUOUS SHRUBS, continued.				
Benzoin odoriferum (Spice-Bush). 6 to 10 ft. Spicy bark, the yellow flowers appearing before the leaves. Fruit bright red.	1 to 2 ft.	\$1 00		
	2 to 3 ft.	* 50	\$3 00	\$25 00
Baccharis halimifolia . 2 to 10 ft. Smooth, handsome growth and leaves; white flowers.	6 to 12 in.	2 00		
	1 to 2 ft.	* 75	5 00	
Callicarpa Americana (French Mulberry). 3 to 6 ft. In winter the numerous clusters of light purplish berries which encircle the summit of the branches at regular intervals of 10 or 12 inches, give it a very striking and pleasing appearance.	6 to 12 in.	75		
	1 to 2 ft.	1 25		
Calycanthus floridus (Sweet Shrub). 3 to 8 ft.	1 to 2 ft.	*1 00	6 00	50 00
	6 to 12 in.	50	4 00	30 00
" glaucus (Carolina Allspice). 5 to 15 ft. Leaves and brown flowers larger than in <i>Floridus</i> . (See page 12.)	12 to 18 in.	1 00	7 00	50 00
	3 to 6 in.	85	2 50	15 00
Ceanothus Americanus . 1 to 3 ft. A fine shrub, forming clumps and covered with dense panicles of small white flowers.	1 to 2 ft.	1 00		
	1 to 2 ft.	* 40	3 50	25 00
Chionanthus Virginica (White Fringe). 4 to 12 ft. White, fringe-like, fragrant flowers. Very popular for parks and cemeteries.	1 to 2 ft.	* 75	5 00	40 00
	6 to 12 in.	65	4 50	35 00
Clethra acuminata (Southern Pepper-Bush). 8 to 16 ft. Beautiful bark and fragrant white flowers in nodding spikes. This and the following species highly recommended for lawns, parks, etc.	1 to 2 ft.	* 40	3 00	25 00
	1 to 2 ft.	* 75	5 00	40 00
Clethra alnifolia (Pepper-Bush). 4 to 8 ft. Very fragrant.	6 to 12 in.	50	3 50	30 00
	1 to 2 ft.	* 25	2 00	15 00
Cornus stricta (Dogwood). 10 to 20 ft.	1 to 2 ft.	* 40	3 00	25 00
	2 to 3 ft., heavy.	1 25	10 00	
" paniculata . 4 to 8 ft.	3 to 4 ft., heavy.	2 00	15 00	
	1 to 2 ft.	75	5 00	40 00
" sericea . 6 to 10 ft.	2 to 3 ft., heavy.	2 00	15 00	
	1 to 2 ft.	* 50	3 50	30 00
" florida . See under Trees.	2 to 3 ft.	3 00		
	2 to 3 ft.	3 00		
" alternifolia . See under Trees, page 10.	2 to 3 ft.	1 00	7 00	
	2 to 3 ft.	3 00		
☞ All the Dogwoods (<i>Cornus</i>) are considered very useful in landscape work.				
Comptonia asplenifolia (Sweet Fern). 1 to 2 ft. Pretty, small, aromatic shrub, the leaves resembling the fronds of a fern.	6 to 12 in.	1 00	8 00	70 00
	6 to 12 in.	* 50	3 50	30 00
Castanea pumila (Chinquapin). 4 to 20 ft. Fine, small, oval nuts. Reaches the proportions of a tree in the lower districts.	9 to 18 in.	75	5 00	
	9 to 18 in.	* 50	3 50	30 00
Diervilla sessilifolia (Mountain Bush-Honeysuckle). 3 to 5 ft. Forms thick clumps; abundant sulphur-yellow flowers in late summer; showy.	1 to 2 ft.	50	3 50	
	1 to 2 ft.	* 25	2 00	15 00
Enonymus Americanus (Strawberry-Bush). 2 to 6 ft. The fruit gives this plant a peculiar beauty, for which it is chiefly prized in shrubberies. This is of a crimson color, and finally, when mature, bursts open, exposing the bright scarlet seed.	2 to 3 ft., heavy.	1 00	7 00	
	1 to 2 ft.	1 00	8 00	
" Americanus (Strawberry-Bush). 2 to 6 ft. The fruit gives this plant a peculiar beauty, for which it is chiefly prized in shrubberies. This is of a crimson color, and finally, when mature, bursts open, exposing the bright scarlet seed.	1 to 2 ft.	* 40	3 00	25 00

(*) denotes COLLECTED plants.

HARDY AMERICAN ORNAMENTAL PLANTS.

Varieties.	SIZE AND GRADE.	PRICES.		
		TO	100	1,000
DECIDUOUS SHRUBS, continued.				
<i>Dirca palustris</i> (Leatherwood). 3 to 5 ft. Low, branching shrub; the young leaves silky, flowers yellow. The tough bark is used by the Indians for thongs.	6 to 12 in.	\$0 65	\$4 50	
	1 to 2 ft.	* 40	3 00	\$25 00
<i>Gaylussacia ursina</i> (Buckberry). 3 to 5 ft. Fruit tart; used in making jellies.	6 to 12 in.	1 00	7 00	
	6 to 12 in.	* 50	3 50	30 00
<i>Gaylussacia frondosa</i> (Blueberry). 3 to 6 ft. The delicious Huckle or Blueberry of our mountains.	6 to 18 in.	75	5 00	
	6 to 18 in.	* 40	3 00	20 00
<i>Hamamelis Virginica</i> (Witch-Hazel). 8 to 15 ft. Yellow-ribboned flowers appear in <i>late fall</i> or <i>early winter</i> , when leaves are dropping. Invaluable in ornamental work, and no other can be found to fill its unique place.	6 to 12 in.	75	6 00	
	1 to 2 ft.	* 30	2 50	20 00
	2 to 3 ft.	1 00	8 00	
<i>Hydrangea radiata</i> (Wild Hydrangea). 4 to 8 ft. The leaves are downy white underneath, giving this plant a peculiar charm in the fall, as the leaves <i>curl up</i> .	6 to 12 in.	* 50	3 50	30 00
	1 to 2 ft.	1 50	11 00	
<i>Hydrangea arborescens</i> (Smooth Hydrangea). 3 to 10 ft. Forms smooth, thick clumps; the thin leaves are very attractive.	1 to 2 ft.	* 65	4 00	35 00
	1 to 2 ft.	65	4 00	35 00
	2 to 3 ft.	* 25	2 00	15 00
<i>Itea Virginica</i> . 4 to 8 ft. Beautiful shrub; small white flowers in drooping racemes 3 to 5 inches long at the end.	1 to 2 ft.	1 00	7 00	
	2 to 3 ft.	* 40	3 00	25 00
<i>Leucothoe recurva</i> . 4 to 10 ft. Yearly shoots <i>bright red</i> , contrasting sharply with the old, gray growths. White and pink flowers on recurved stems.	6 to 12 in.	65	4 50	
	1 to 2 ft.	* 30	2 50	20 00
<i>Menziesia globularis</i> (Menziesia). 4 to 8 ft. Smooth shrub, with reddish bark and small, nodding, pink-white flowers in terminal clusters.	1 to 2 ft.	* 50	3 50	30 00
	2 to 3 ft.	75	5 00	40 00
	3 to 4 ft.	* 40	3 00	25 00
<i>Pyrus arbutifolia</i> (Chokeberry). 2 to 4 ft. <i>Snowy</i> white flowers and dark purple fruit. A good undershrub.	1 to 2 ft.	1 25	10 00	
	1 to 2 ft.	2 50		
<i>Pyrus erythrocarpa</i> (Tall Chokeberry). 10 to 20 ft. Large leaves and <i>red</i> berries.	1 to 2 ft.	75	5 00	40 00
	1 to 2 ft.	* 30	2 50	20 00
<i>Pyrus erythrocarpa</i> (Tall Chokeberry). 10 to 20 ft. Large leaves and <i>red</i> berries.	2 to 3 ft.	1 25	10 00	
	1 to 2 ft.	1 00	6 00	
<i>Pyralia oleifera</i> (Oil-Nut). 3 to 8 ft. Peculiar, oily shrub. Pear-shaped fruit an inch long.	1 to 2 ft.	* 40	3 00	25 00
	1 to 2 ft.	* 1 00	7 00	
<i>Rhododendron Vaseyi</i> . 8 to 15 ft. Beautiful, new deciduous <i>Rhododendron</i> introduced by us. Profuse and very early bloomer, through all shades of pink. Invaluable addition for lawn, park, garden and cemetery. <i>Nurserymen and florists should all catalogue this fine new Rhododendron</i> , and at the prices at which we offer it no one need be without it. Larger quantities than above quoted at <i>special rates</i> .	6 to 12 in.	1 00	7 00	60 00
	1 to 2 ft.	* 50	3 50	30 00
	1 to 2 ft.	1 25	10 00	75 00
<i>Ribes prostratum</i> . 1 to 2 ft. Lobed leaves, color bright red in early autumn; reclining stems.	2 to 3 ft.	* 75	5 00	40 00
	2 to 3 ft.	2 50	20 00	
<i>Ribes rotundifolium</i> (Wild Gooseberry). 2 to 5 ft.	3 to 4 ft.	* 1 25	10 00	75 00
	3 to 4 ft.	10 00	90 00	
<i>Rhus copallina</i> (Sumach). 3 to 6 ft. The large <i>pin-nate</i> leaves turn deep crimson in fall.	6 to 12 in.	1 00	7 00	
	1 to 2 ft.	* 50	3 50	30 00
<i>Rhus copallina</i> (Sumach). 3 to 6 ft. The large <i>pin-nate</i> leaves turn deep crimson in fall.	1 to 2 ft.	1 00	7 00	
	1 to 2 ft.	* 50	3 50	
<i>Rhus copallina</i> (Sumach). 3 to 6 ft. The large <i>pin-nate</i> leaves turn deep crimson in fall.	2 to 3 ft.	75		
	2 to 3 ft.	* 50	3 50	
		1 00		
		* 75	5 00	

(*) denotes COLLECTED plants.

Varieties.	SIZE AND GRADE.	PRICES.		
		10	100	1,000
DECIDUOUS SHRUBS, continued.				
<i>Rhus typhina</i> (Staghorn Sumach). 10 to 20 ft. A fine form.	1 to 2 ft.	*\$0 75	\$5 00	
<i>Rhodora Canadensis</i> (Rhodora). 2 to 5 ft. Handsome low shrub, the showy rose-purple azalea-like flowers in short-stemmed clusters, earlier than the leaves.	1 to 2 ft.	* 1 00	5 00	\$50 00
<i>Robinia viscosa</i> (Clammy Locust). 6 to 15 ft. Large clusters of bright pink, pea-shaped flowers and conspicuous pinnate leaves. Rare.	1 to 2 ft.	* 1 00	7 00	
	2 to 4 ft.	4 00		
<i>Robinia hispida</i> (Flowering Locust). 2 to 6 ft. A very pretty pink species, with bristly stems.	6 to 12 in.	50	3 50	30 00
	1 to 2 ft.	75	5 00	40 00
<i>Robinia hispida</i> , var. <i>rosea</i> . 5 to 10 ft. New; a valuable variety of the last, with lighter flowers.	1 to 2 ft.	* 1 00	7 00	60 00
<i>Rosa Carolina</i> (Carolina Rose). 6 to 10 ft. Beautiful, sweet-scented pink flowers in large clusters.	1 to 2 ft., fine.	1 00	6 00	50 00
	2 to 3 ft.	* 50	3 50	30 00
	9 to 18 in.	1 50	12 00	100 00
<i>Rosa lucida</i> (Dwarf Rose). 1 to 3 ft. Smaller than <i>Carolina</i> , and flowers more scattered.	1 to 2 ft.	* 1 00	6 00	
<i>Rosa rubiginosa</i> (Sweetbrier, Eglantine). 4 to 10 ft. Escaped cultivation in our mountains.	50	3 50	30 00	
	75	5 00		
<i>Rubus odoratus</i> (Flowering Raspberry). 4 to 15 ft. Vine-like shrub; dense, showy lobed leaves. Very valuable for rapidly covering space under trees and in other shady situations.	1 to 2 ft.	65	4 50	35 00
	2 to 3 ft.	* 30	2 50	20 00
	2 to 3 ft.	* 85	6 00	50 00
<i>Rubus villosus</i> (High Blackberry). 4 to 12 ft. Showy white flowers and edible fruit. The parent of the garden blackberry.	1 to 2 ft.	* 50	3 50	30 00
	1 to 2 ft.	* 25	2 00	10 00
<i>Rubus trivialis</i> (Dewberry). 3 to 6 ft. Trailing form; <i>berries sweet</i> .	1 to 2 ft.	* 25	2 00	10 00
<i>Rubus hispidus</i> . 3 to 6 ft. Prostrate; <i>berries sour</i> .	1 to 2 ft.	* 40	3 00	20 00
<i>Salix sericea</i> (Silky Willow). 2 to 3 ft.	1 to 2 ft.	* 65	4 50	
<i>Sambucus Canadensis</i> (Elderberry). 6 to 12 ft. Showy, white clustered flowers and black fruit.	1 to 2 ft.	* 40	3 00	20 00
	2 to 3 ft.	* 50	3 50	25 00
<i>Sambucus pubens</i> (Mountain Elderberry). 4 to 12 ft. A very fine species. Large, fragrant, lilac-like flowers and brilliant red fruit.	1 to 2 ft.	1 00	7 00	
	2 to 3 ft.	* 75	5 00	40 00
	2 to 3 ft.	1 50		
<i>Stuartia pentagyna</i> . 12 to 15 ft. Rare and beautiful. Large, saucer-shaped, cream-colored flowers, with purplish center. The "native American Camellia." One of the most valuable of late additions to gardening.	6 to 12 in.	* 1 25	10 00	75 00
	1 to 2 ft.	* 75	5 00	40 00
	1 to 2 ft.	2 00	15 00	125 00
<i>Stuartia Virginica</i> . 8 to 15 ft. Large, beautiful, abundant flowers.	1 to 2 ft.	* 1 00	7 00	60 00
<i>Spiraea opulifolia</i> . 3 to 5 ft. White-corymbed flowers. Old bark peels off in thin layers.	1 to 2 ft.	* 1 50	12 00	
<i>Spiraea salicifolia</i> (Ty-Ty). 3 to 6 ft. Beautiful shrub, with delicate growth and white, perennial, spiked flowers. August and September.	1 to 2 ft.	* 50	3 50	30 00
	2 to 3 ft.	* 75	5 00	40 00
<i>Symphoricarpos racemosus</i> (Snowberry). 3 to 6 ft.	1 to 2 ft.	1 00		
<i>Vaccinium erythrocarpum</i> . 3 to 8 ft.	1 to 2 ft.	75	5 00	40 60
	1 to 2 ft.	* 40	3 00	25 00

(*) denotes COLLECTED plants.

Varieties.	SIZE AND GRADE.	PRICES.		
		10	100	1,000
DECIDUOUS SHRUBS, continued.				
<i>Vaccinium hirsutum</i> (Hairy Huckleberry). 1 to 4 ft. Introduced by us last year. Whole plant hairy, even the edible fruit.	6 to 9 in.	\$0 50	\$3 50	\$30 00
<i>Vaccinium stamineum</i> (Deerberry). 4 to 10 ft. Delicate white or pink flowers in leafy racemes. A most valuable garden plant.	1 to 2 ft.	1 00	7 00	
		* 50	3 50	30 00
<i>Vaccinium macrocarpum</i> (Cranberry). 8 to 20 in.	4 to 12 in.	* 50	2 00	8 00
<i>Vaccinium crassifolium</i> (Creeping Huckleberry). 6 to 20 in.	4 to 12 in.	*1 00	7 00	
<i>Viburnum acerifolium</i> (Maple-leaved Arrowwood). 3 to 6 ft. Handsome, claret-colored foliage in autumn; white clustered flowers and showy black fruit.	1 to 2 ft.	75	5 00	40 00
		* 40	3 00	25 00
<i>Viburnum lantanoides</i> (Hobble Bush). 4 to 12 ft. One of the earliest and richest colored shrubs in fall, the large shaded scarlet leaves nearly equalled by its branches of brilliant red fruit.	1 to 2 ft.	1 00	7 00	60 00
		* 50	3 50	30 00
	2 to 3 ft.	1 25	10 00	
		* 75	5 00	40 00
<i>Viburnum nudum</i> (Shawnee Haw). 8 to 12 ft. White-corymbed flowers and purple-black fruit.	1 to 2 ft.	* 75	5 00	
	2 to 3 ft.	2 00		
<i>Xanthorhiza apiifolia</i> (Yellow Root). 2 to 3½ ft. Very useful for margin of shrubberies; conspicuous pinnate leaves, bright orange in autumn. Pendulous racemes of brown flowers, followed by specially showy, white, persistent fruit on fertile plants. Roots, inner bark and wood bright yellow.	6 to 12 in.	75	5 00	40 00
		* 40	3 00	25 00
	1 to 2 ft.	1 00	7 00	
		* 65	4 50	35 00

Hardy Native Vines and Climbers.

Varieties.	SIZE AND GRADE.	PRICES.		
		10	100	1,000
<i>Ampelopsis bipinnata</i> . 15 to 30 ft. Beautiful cut leaves.	1 to 2 ft.	\$2 00		
<i>Ampelopsis quinquefolia</i> (Virginia Creeper). 10 to 50 ft.	6 to 12 in.	75	\$5 50	
		* 50	3 50	\$30 00
<i>Aristolochia siphon</i> (Dutchman's Pipe). 20 to 40 ft.	6 to 12 in.	1 20	9 00	
		* 75	5 00	
<i>Bignonia capreolata</i> (Cross Vine). 10 to 30 ft.	6 to 12 in.	1 50	10 00	
		* 75	5 00	40 00
" <i>radicans</i> (Trumpet Flower). 12 to 20 ft.	6 to 12 in.	3 00		
		*1 00	7 00	
<i>Clematis coccinea</i> (Scarlet Clematis). 5 to 12 ft.	Strong.	2 50		
" <i>crispa</i> (Crisped Leather Flower). 3 to 10 ft.	Strong.	1 00	7 00	
" <i>Virginiana</i> (Virgin's Bower). 10 to 30 ft.	Strong.	75	5 00	40 00
We supply large quantities of this beautiful climber every year.		* 50	3 50	20 00
<i>Clematis flammula</i> . 5 to 12 ft.	Strong.	2 00		
<i>Cocculus Caroliniana</i> . 10 to 15 ft. Flowers white; fruit red.	Strong.	1 00	7 00	

(*) denotes COLLECTED plants.

Varieties.	SIZE AND GRADE.	PRICES.		
		10	100	1,000
HARDY VINES AND CLIMBERS, continued.				
<i>Decumaria barbara</i> (American Climbing Hydrangea). 10 to 30 ft.	6 to 12 in.	*\$0 75	\$5 00	\$40 00
<i>Dioscorea villosa</i> . 6 to 12 ft. Fine climber; hop-like fruit.	Strong.	75	5 00	40 00
		* 50	3 50	20 00
<i>Gelsemium sempervirens</i> (Carolina Jasmine). 10 to 30 ft. A beautiful climber, with yellow, sweet-scented flowers, but not hardy in the North.	Strong.	1 00	6 00	
<i>Ipomoea pandurata</i> . 10 to 30 ft.	Strong.	1 50		
<i>Lonicera parviflora</i> . 10 to 40 ft. A fine woody vine, with handsome leaves and showy red flowers. A splendid stock on hand.	6 to 12 in.	* 75	5 00	40 00
		* 50	3 50	20 00
	1 to 2 ft.	* 1 00	7 00	
		* 65	4 50	35 00
<i>Lonicera sempervirens</i> . 8 to 20 ft. Scarlet.	2 to 4 ft., heavy.	2 50		
		* 1 00	7 00	
<i>Lonicera flava</i> (Common Honeysuckle). 8 to 20 ft. One of the best vines grown for quickly covering walls, stone fences, etc.	1 to 2 ft.	* 1 00	7 00	
<i>Menispermum Canadense</i> (Moon Seed). 6 to 8 ft. Cordate leaves, white flowers and black fruit.	Strong.	50	3 50	30 00
<i>Passiflora incarnata</i> (Passion Flower). 4 to 8 ft. Large, purple, showy flowers.	Strong.	75	5 00	
		* 40	3 00	25 00
<i>Wistaria frutescens</i> (American Wistaria). 30 ft. Large trusses of purple flowers in pinnate leaves.	Strong.	* 75	5 00	40 00
	Seedlings.	* 65	4 50	

(*) denotes COLLECTED plants.



DECUMARIA BARBARA.



[Copyright: The American Garden.]

POLYPODIUM VULGARIS.

Hardy Native Ferns.

Ferns are among the most beautiful and indispensable plants used in gardening. Among the following are many of the best. Those marked with a dagger (†) are Evergreens.

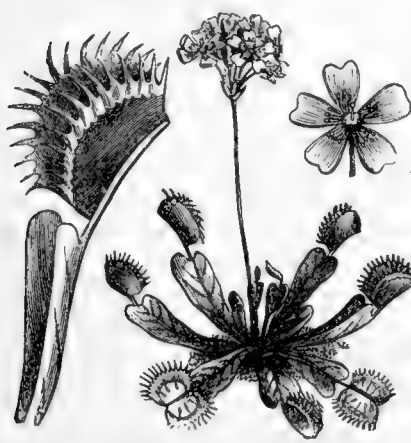
	10	100	1,000
Adiantum pedatum (Maiden-Hair Fern). 8 to 15 in. high. Delicate forked fronds. One of the finest	\$0 75	\$4 00	\$25 00
† Aspidium acrostichoides (Shield Fern). 12 to 18 in. high. Dark evergreen fronds	50	3 00	20 00
† " marginale . 1 to 2 ft. high. Thick fronds. Very pretty . .	75	4 00	25 00
† " spinulosum . 1 to 2½ ft. high. Tall, finely-cut segments . .	50	3 00	20 00
† Asplenium ebeneum . 8 to 16 in. high. Narrow lace-like fronds . .	75	4 00	25 00
" trichomanes . 3 to 8 in. high. Dainty tufted species	1 00	7 00	
† Botrychium lunarioides (Moonwort). 3 to 8 in. Curious low species.	75	5 00	40 00
" " var. obliquum . 3 to 8 in. high. Very pretty variety, with cut fronds	75	5 00	40 00
" " var. dissectum . 3 to 8 in. high. Lacinate. Very delicate.	75	5 00	40 00
" Virginicum . 6 in. to 2 ft. high. Spreading, triangular fronds. Very prettily cut	75	5 00	40 00
† Camptosorus rhizophyllus (Walking-Leaf Fern). 6 to 10 in. high. Very curious. Fronds take root at tips, forming new plants	75	5 00	35 00
† Cystopteris fragilis . 4 to 8 in. high. Delicate little Fern on moist rocks.	2 00	12 00	

HARDY NATIVE FERNS, continued.

	10	100	1,000
<i>Cystopteris bulbifera</i> . 8 in. to 2 ft. high. Very narrow, long fronds, bearing bulblets on the tips	\$1 00	\$7 00	\$50 00
† <i>Cheilanthes tomentosa</i> . 6 to 18 in. high. Fronds wooly-white. Conspicuous	3 00		
<i>Dicksonia punctilobula</i> . 10 to 20 in. high. Odorous, delicate fern . .	50	3 00	20 00
<i>Lygodium palmatum</i> (Climbing Fern). 15 to 40 in. high. Pretty, deeply-cut pinnæ	75	5 00	25 00
<i>Onclea sensibilis</i> . 4 in. to 3 ft. high. Wet situations	1 00	6 00	
<i>Osmunda cinnamomea</i> (Cinnamon Fern). 1 to 4 ft. high. Large, showy fern in clumps.	1 00	6 00	40 00
“ <i>regalis</i> . 1 to 3 ft.	1 00	6 00	45 00
“ <i>Claytonian</i> . 1 to 3 ft.	1 00	6 00	50 00
† <i>Polypodium vulgare</i> (Polypody). 6 to 10 in. high. One of the best for rock work	50	3 00	15 00
“ <i>hexagonopterum</i> . 8 to 15 in. high. Large, triangular fronds	1 00	6 00	
<i>Pellaea atropurpurea</i> . 6 to 15 in. high. A delicate, purplish fern . .	1 00	6 00	

Native Aquatics and Bog Plants.

	10	100	1,000
<i>Acorus</i> (Sweet Flag)	\$0 75	\$4 00	\$30 00
<i>Aster puniceus</i> . Tall-growing. Profusion of lilac-purple flowers in September. Marsh	50	3 50	30 00
<i>Brasenia peltata</i> (Water Shield). Very pretty. Purple; flowers 2 to 3 in. wide	50	3 50	30 00
<i>Chelone glabra alba</i> (Snakehead). 2 to 4 ft. Bog. Flowers irregular. White	1 00		

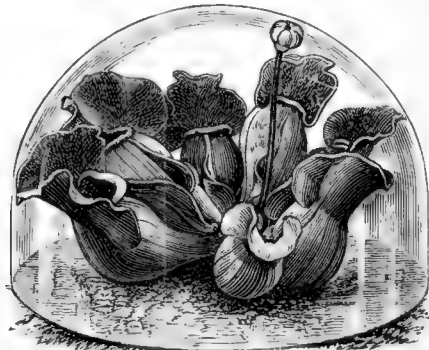


<i>Chelone Lyoni</i> (Purple Snakehead). 2 to 3 ft. Bog. Growing in clumps. Flowers purple	75	5 00	40 00
<i>Dionaea muscipula</i> (Venus' Fly Trap). 3 to 6 in. Moist sand or moss. Leaves closing forcibly at touch, thus feeding on venturesome insects. We are headquarters for this most curious insectivorous plant	50	3 50	30 00
<i>Drosera rotundifolia</i> (Round-leaved Sundew). 6 to 9 in. Flowers white. All the <i>Droseras</i> have pretty, hairy leaves, bearing a drop of sticky sundew, which catches insects	50	3 00	20 00
<i>Drosera capillaris</i> . 6 to 15 in. Pale rose-color. Leaves spatulate	75	5 00	30 00

DIONEAE MUSCIPULA (Venus' Fly-Trap).

NATIVE AQUATICS AND BOG PLANTS, continued.

	10	100	1,000
<i>Drosera brevifolia</i> . 3 to 6 in. Leaves very short. Flowers white . . .	\$0 75	\$5 00	\$30 00
“ <i>longifolia</i> . 4 to 6 in. Small white flowers. Linear leaves . . .	75	5 00	30 00
“ <i>filiformis</i> . 12 to 18 in. Leaves <i>filiform</i> . Flowers purple . . .	1 00	7 00	40 00
<i>Impatiens fulva</i> (Touch-Me-Not). Annual, 3 to 6 ft. Flowers showy, spotted reddish. Seed, 25 cents per packet.			
“ <i>pallida</i> . Annual, 3 to 6 feet. Flowers yellow. 25 cts. per pkt.			
<i>Ligusticum actaeifolium</i> . 3 to 8 ft. high. Large, showy, divided leaves . . .	75	5 00	
<i>Nuphar sagittifolia</i> (Yellow Water-Lily). Rare. Yellow flowers; large, saggitate leaves . . .	1 25	10 00	
“ <i>adventa</i> (Spatterdock). Thick cordate leaves. Yellow . . .	1 25	10 00	
<i>Nymphaea odorata</i> (Water Lily). Pure white or pink tinged. Beautiful aquatic . . .	1 00	5 00	35 00
“ <i>flava</i> . Yellow, 3 to 4-in. flowers. Showy leaves. Rare . . .	1 50	12 00	100 00
<i>Orontium aquaticum</i> (Golden Club). Thick leaves 1 ft. long; peculiar yellow flowers on a club-shaped scape . . .	1 00	5 00	40 00
<i>Pontederia cordata</i> (Pickerel Weed). 6 to 15 in. above water. Blue-spiked flowers and erect cordate leaves . . .	1 00	7 00	
<i>Sagittaria variabilis</i> (Arrow-Head). White flowers. Arrow-shaped leaves . . .	50	3 50	30 00
<i>Sarracenia Drummondii</i> . Leaves erect, 2 ft. high, variegated with white at top. Flowers white and purple . . .	2 00	12 50	100 00
<i>Sarracenia flava</i> (Trumpet-Leaf). Yellow leaves 2 to 3 ft., and large, nodding yellow flowers 2 to 3 in. wide. <i>Very showy Bog plant</i> . The <i>Sarracenias</i> are very conspicuous Bog plants, and all are <i>insectivorous</i> . . .	75	5 00	40 00
<i>Sarracenia Psittacina</i> (Parrot-beaked Pitcher-Plant). Leaves short, 2 to 4 in. long, marked with white spots. Purple flowers . . .	2 00	12 50	100 00
<i>Sarracenia purpurea</i> (Pitcher-Plant). Large, purple flowers, nodding on a stalk a foot high. Pitcher-shaped leaves. Prostrate, 3 to 8 in. long . . .	75	5 00	40 00
<i>Sarracenia rubra</i> (Red Trumpet-Leaf). Leaves 10 to 18 in. long. Reddish purple flowers . . .	1 00	6 00	50 00
<i>Sarracenia variolaris</i> (Spotted Trumpet-Leaf). Leaves 6 to 12 in. long, spotted with white near the yellowish summit; yellow flowers . . .	1 00	6 00	50 00
<i>Vaccinium macrocarpum</i> (Cranberry). 8 to 20 in. Evergreen . . .	50	2 00	8 00



SARRACENIA PURPUREA.

Orchids.

	10	100	1,000
<i>Arethusa bulbosa</i> . 6 to 9 in. high. Large, terminal, bright purple flower, 1 to 2 in. Very fragrant	\$1 00	\$6 00	\$50 00
<i>Calopogon pulchellus</i> . Scape 12 to 18 in. Bears 2 to 8 purple flowers 1 in. wide. Showy	1 00	6 00	50 00
<i>Cypripedium acaule</i> (Stemless Lady's Slipper). Large purple flowers, from thick cluster of leaves	1 00	6 00	50 00
<i>Cypripedium pubescens</i> (Large Yellow Lady's Slipper). 1 to 2 ft. Bright yellow "slippers" (flowers)	1 00	6 00	50 00
" <i>spectabile</i> (Showy Lady's Slipper). 1 to 2 ft. Showiest of all American Orchids. Large white, purple-tinged flowers	2 00	15 00	
<i>Goodyera pubescens</i> (Rattlesnake Plantain). 8 to 14 in. Low cluster of white-veined leaves. White flowers; spiked	75	5 00	40 00
" <i>repens</i> . 6 to 12 in. Rare. Mottled leaves; one-sided spikes.	1 00	6 00	
<i>Gymnadenia tridentata</i> . 4 to 10 in. Small green-flowered	75	5 00	40 00
<i>Liparis lilifolia</i> (Twayblade). Large leaves. Pretty green flowers	1 00		
<i>Orchis spectabilis</i> (Showy Orchis). 4 to 8 in. Purple and white. Very showy	1 50	12 00	
<i>Platanthera blephariglotis</i> . 8 to 16 in. White-fringed flowers. Rare.	2 00	15 00	
" <i>ciliaris</i> (Yellow-fringed Orchis). 8 to 20 in. Bright yellow. Very showy and fine	1 00	6 00	50 00
" <i>psycodes</i> (Purple-fringed Orchis). 6 to 15 in. Similar to last, but with purple flowers	2 00	15 00	
<i>Pogonia ophioglossoides</i> . 5 to 12 in. Delicate, with solitary rose-colored flowers $\frac{1}{2}$ in. long. Wet places	1 00	6 00	50 00
" <i>pendula</i> . 3 to 8 in. Dry woods. 1 to 6 flowers on low stem.	1 00	6 00	50 00
<i>Ponthieva glandulosa</i> . Broad flat leaves and greenish flowers	1 00	6 00	

Hardy Native Herbaceous Perennials

	10	100	1,000
†Evergreens.			
<i>Aconitum reclinatum</i> . Very rare. Pretty divided foliage	\$1 50	\$8 00	
" <i>uncinatum</i> (Monkshood). 2 to 6 ft. Smooth vine-like stem, bearing brilliant large blue flowers. Rare	1 25	10 00	
<i>Allium cernuum</i> . 1 to $1\frac{1}{2}$ ft. Nodding clusters of rose-colored flowers. A very fine plant	1 00	7 00	\$60 00
<i>Actæa alba</i> (Baneberry). 2 ft. Thrice compound leaves 1 ft. across, and white flowers and berries. Flower-stalk red.	50	3 50	30 00
<i>Arisæma triphylla</i> (Indian Turnip). 1 to 3 ft. 3-lobed leaves. "Jack-in-the-Pulpit" flowers	50	3 50	30 00
† <i>Asarum arifolium</i> (Wild Ginger). Thick auricled leaves. Showy. Flowers purple	1 00	7 00	60 00
" <i>Virginicum</i> (Asarabacca). Thick mottled heart-shaped leaves. Purple flowers.	40	3 00	25 00
<i>Asclepias phytolaccoides</i> (Poke Milkweed). 2 to 5 ft. Flowers in thick drooping clusters. White	45	5 00	40 00
" <i>tuberosa</i> (Butterfly Weed). 1 to 2 ft. Leafy, wide-branched stem. Brilliant orange-red	1 00		
<i>Ascyrum Crux-Andrææ</i> (St. Peter's Wort). 4 to 8 in. Pretty yellow blossoms	75	5 00	40 00
<i>Amianthium muscætoxicum</i> (Crow Poison). 1 to 2 ft. Early, long grass-like leaves. Tall spikes of pure white flowers	50	3 50	20 00
" <i>angustifolium</i> (Small Fly Poison). 6 to 12 in. White, turning purple	75		
<i>Aster puniceus</i> (Swamp Aster). 3 to 6 ft. Deep lilac-purple and fine.	50	3 50	30 00
" <i>cordifolius</i> . 2 to 4 ft. Flowers pale violet, profuse; curving stem.	50	3 50	30 00

HARDY NATIVE HERBACEOUS PERENNIALS, continued.

	10	100	1,000
Aster mixture. 1 to 6 ft. Fine selection. Many fine, showy species	\$0 40	\$3 00	\$20 00
Anemone nemorosa (Wood Anemone). 4 to 6 in. White or pinkish. Early spring	25	2 00	15 00
Aralia racemosa (Spikenard). 3 to 5 ft. Widely branched. Large, decompound leaves, whitish paniced flowers.	50	3 50	30 00
“ nudicaulis (Wild Sarsaparilla). 12 in. Greenish. Flower- clusters and leaves in <i>threes</i>	50	3 50	30 00
Angelica Curtisii (Angelica). 3 to 4 ft. Fine, decompound leaves, white-umbelled flowers. A noted medicinal plant	50	3 50	30 00
Archangelica hirsuta. 1 to 3 ft. Fuzzy appearance. Handsome leaves.	75	5 00	40 00
Aquilegia Canadense (Columbine). 10 to 20 in. Yellow and red flowers and showy cut leaves. One of our prettiest wild flowers.	75	50 0	
Amsonia ciliata. 5 in. to 3 ft. A pretty plant. Flowers pale blue, in terminal racemes	1 00	7 00	
Baptisia australis (Blue False Indigo). 2 to 3 ft. Large indigo-blue flowers. Spreading	1 00		
“ tinctoria (Wild Indigo). 2 to 3 ft. Yellow abundant flowers	50	3 50	20 00
“ simplicifolia (Southern Indigo). 1 to 2 ft. Yellow; <i>small</i>	1 00		
“ alba (White Indigo). 2 to 3 ft. Showy white racemes, <i>1 to</i> <i>2 ft. long</i>	1 00		
Brunella vulgaris (Brunella). 3 to 10 in. Purplish	20	1 50	10 00
Campanula Americana. 2 to 5 ft. Very fine annual, flowers spiked, well-shaped, bright blue. Seed, 25 cts. per pkt.			
“ divaricata (Bell-Flower). 6 to 10 in. Delicate blue, bell- shaped flowers	25	2 00	15 00
Cavex Frazeri. <i>New</i> . One of the most unique and curious of plants. Blooms in early March. White spike, globose at base, sur- mounted by a cylindrical top. We have the only stock in America.	1 50	10 00	80 00
+ Chimaphila maculata (Spotted Wintergreen). 3 to 8 in. Waxy-white, fragrant, drooping flowers	50	3 50	20 00
Clintonia umbellata (Southern Clintonia). 4 to 6 in. Umbelled white odorous flowers, speckled with green or purple dots	25	2 00	15 00
“ borealis (Alpine Clintonia). 4 to 8 in. Clusters of showy greenish yellow flowers, from whorl of thick glossy leaves	25	2 00	15 00
Chelone glabra alba (White Snake's-Head). 2 to 4 ft. White, irregular flowers	1 00		
“ Lyoni (Pink Snake's-Head). 2 to 3 ft. Pink. Very showy	75	5 00	40 00
Cimicifuga racemosa (Black Snakeroot). 3 to 6 ft. Large, divided leaves, tall white spikes	50	3 50	25 00
Convallaria majalis (Lily-of-the-Valley). 5 to 10 in. One-sided ra- cemes, of white, nodding, fragrant blossoms	50	3 50	25 00
Coreopsis verticillata (Coreopsis). 8 to 12 in. Finely cut leaves and yellow flowers	75	5 00	
“ trichosperma (Swamp Coreopsis). 2 to 6 ft. Large cut leaves. <i>Bright yellow</i>	50	3 50	25 00
Claytonia Caroliniana (Spring Beauty). 3 to 6 in. Early spring. <i>Rose-colored</i>	20	1 50	10 00
Circæa Lutetiana. 6 to 15 in. Minute pink flowers. Slender	50	3 50	
Callirrhoe involucreta (Crimson Callirrhoe). 9 to 15 in. Prostrate spreading plant from Texas. <i>Crimson</i>	2 50		
Dicentra Canadensis (Squirrel Corn). 6 to 15 in. Pretty cut foliage. <i>Yellowish</i>	20	1 50	10 00
Dicentra eximea. 10 to 20 in. Thick clumps; light, feathery foliage, the beautiful rose-colored blossoms appearing all sum- mer in drooping racemes	1 00	7 00	50 00
“ spectabile (Bleeding Heart). 1 to 2 ft. <i>Heart-shaped</i> flow- ers. Rosy crimson and white	2 00	12 00	
Diphylleia cymosa (Umbrella Leaf). 1 to 3 ft. Large lobed leaves. White flowers. Fine	50	3 50	25 00

HARDY NATIVE HERBACEOUS PERENNIALS, continued.

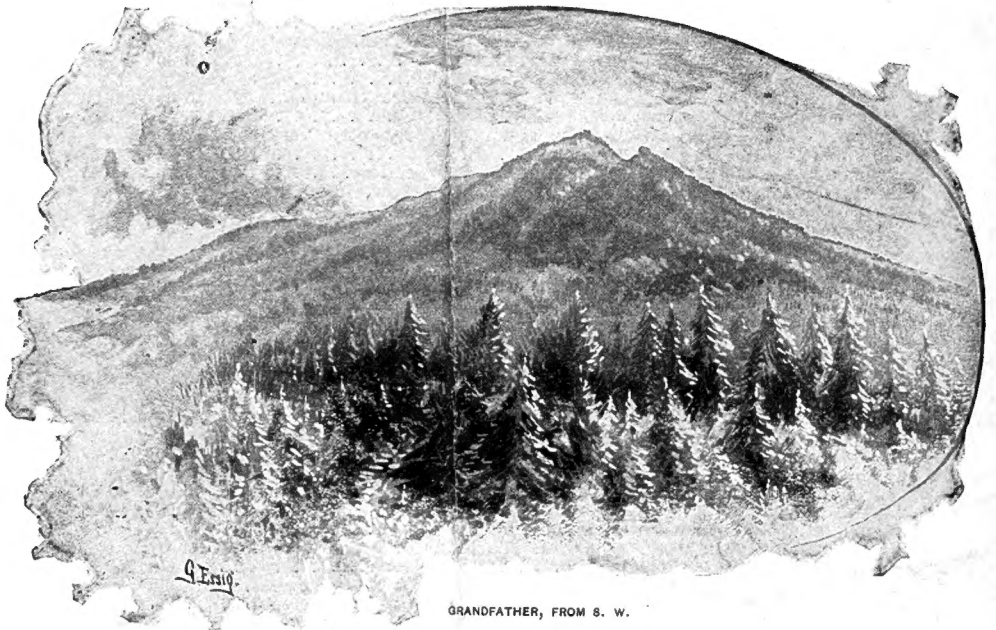
	10	100	1,000
† <i>Epigea repens</i> (Trailing Arbutus). 3 to 8 in. Trailing. Deliciously fragrant white and pink flowers in May and June	\$0 50	\$3 50	\$30 00
<i>Eupatorium ageratoides</i> (White Snakeroot). 1 to 3 ft. Abundant white flowers in late summer and fall	50	3 00	20 00
“ <i>purpureum</i> (Purple Snakeroot). 3 to 8 ft. Purple	1 00	7 00	50 00
<i>Euphorbia corollata</i> (Flowering Spurge). 2 to 3 ft. Pure white, greenish center	40	3 00	20 00
<i>Erythronium Americanum</i> (Dog's-tooth Violet). 3 to 6 in. Bright yellow. Earliest spring	20	1 50	10 00
<i>Fragaria Virginiana</i> (Wild Strawberry). 3 to 6 in. White. Red fruit, edible	20	1 50	8 00
<i>Geum radiatum</i> (Avens). 8 to 14 in. Very fine yellow. Showy	75	5 00	40 00
† <i>Galax aphylla</i> (Colt's-Foot). 6 to 15 in. Fine heart-shaped leaves, coloring in autumn. <i>Dense spiked raceme</i> . White	50	3 50	20 00
<i>Gillenia stipulacea</i> (Indian Physic). 9 to 42 in. Handsome <i>cut foliage and flowers</i> , the latter pure white or rose-tinted	50	3 50	20 00
† <i>Gaultheria procumbens</i> (Aromatic). 3 to 6 in. Aromatic. White. Red berries all winter	40	3 00	15 00
<i>Gentiana Andrewsii</i> (Closed Gentian). 6 to 18 in. Bright blue closed flowers 1 in. long, in September and October	40	3 00	15 00
<i>Geranium maculatum</i> (Crane's Bill). 12 to 18 in. <i>Purple</i> . Peculiar beaked fruit	40	3 00	15 00
<i>Heliopsis laevis</i> . 2 to 3 ft. Yellow. A handsome fall plant	75	5 00	
<i>Helonias bullata</i> . 9 to 18 in. Very fine and <i>rare</i> . Long heads of <i>bright purple</i> flowers in early spring. A very showy hardy bog plant that has but few equals. The only large stock in America at very reasonable rates	1 50	10 00	80 00
† <i>Houstonia serpyllifolia</i> (Bluets). 3 to 6 in. Prostrate, light blue; very profuse bloomer; damp places	50	3 00	20 00
“ <i>purpurea</i> . 6 to 12 in. <i>Thick clumps</i> . Blue flowers abundant.	50	3 00	15 00
† <i>Hepatica acutiloba</i> (Acute-lobed Hepatica). 3 to 6 in. White and purple in <i>early March</i> . A delicate little plant	40	2 50	15 00
† “ <i>triloba</i> (Round-lobed Hepatica) 3 to 6 in. Leaf lobes rounded.	75	5 00	
† <i>Iris verna</i> (Flower-de-Luce). 3 to 6 in. Blue fragrant flowers in early April	50	3 00	15 00
“ <i>cristata</i> (Crested Iris). 3 to 6 in. Bright blue flowers, beautifully crested	50	3 00	15 00
<i>Lilium Canadense</i> . 2 to 6 ft. <i>Yellowish</i> , or yellow-red	75	5 00	
“ <i>Philadelphicum</i> (Erect Lily). 1 to 2 ft. Reddish orange, spotted with purple	75	5 00	
“ <i>superbum</i> (Turk's Cap Lily). 3 to 8 ft. Very showy pyramidal racemes of yellowish red blossoms, as many as 36 flowers on a single stem	75	5 00	40 00
“ <i>Grayi</i> (Gray's Lily). 2 to 4 ft. This year's stock <i>all engaged, but we book orders now for next summer's delivery</i> . Beautiful new lily introduced by us. Deep reddish orange, dotted within with purple dots; 1 to 9 flowers on a stem	2 50	20 00	175 00
<i>Lobelia cardinalis</i> (Cardinal Flower). 2 to 4 feet. <i>Brilliant scarlet</i> spikes	75	5 00	40 00
<i>Lobelia siphilitica</i> (Great Blue Lobelia). 1 to 3 feet. <i>Bright blue</i> . Very showy	75	5 00	40 00
<i>Lysimachia quadrifolia</i> . 1 to 2 feet. Yellow <i>whorls</i>	50	3 50	30 00
“ <i>stricta</i> (Loose-strife). 1 to 2 feet. Yellow <i>terminal</i> clusters	50	3 50	30 00
† <i>Mitchella repens</i> (Partridge-berry). Trailing. Shrubby. White wax-like, fragrant flowers; scarlet berries in winter	60	4 00	20 00
<i>Monarda didyma</i> (Wild Bergamot). 2 to 4 feet. Brilliant scarlet.	50	3 00	15 00
“ <i>fistulosa</i> . 1 to 2 feet. Nearly white	50	3 00	15 00
<i>Medeola Virginiana</i> . 5 to 10 inches. Two whorls of leaves on a stem, the upper coloring prettily in fall.	50	3 00	

HARDY NATIVE HERBACEOUS PERENNIALS, continued.

	10	100	1,000
<i>Mimulus ringens</i> (Monkey Flower). 2 to 3 feet. Showy light purple flowers	\$0 50	\$3 00	\$15 00
<i>Nabalium Virginicum</i> . 1 to 3 feet. Beautiful white panicles	1 00	6 00	
<i>Nabalus Frazeri</i> . 2 to 3 feet. Pendulous green flowers. Fall	50	3 00	15 00
<i>Oxalis Acetosella</i> (Wood-Sorrel). 2 to 5 in. White, purple-striped	50	2 50	10 00
<i>Parnassia asarifolia</i> (Grass of Parnassus). 3 to 6 in. Large, single white flowers, beautifully variegated with green	75	5 00	40 00
<i>Panax quinquefolium</i> (Ginseng) 6 to 15 inches. The great Chinese medicinal plant	1 00	7 00	60 00
We are now prepared to furnish plants of this rare and valuable herb in any quantity and at low rates to those wishing to start a commercial "sang" farm. Write me for special terms. This is the coming farm industry, as there is unlimited demand at high prices.			
<i>Petalostemon decumbens</i> . 3 to 5 in. Deep violet-purple. Cut leaves.	1 50		
<i>Phlox subulata</i> (Moss Pink). 3 to 8 in. Thick clumps covered with masses of purple or nearly white flowers	1 50		
<i>Phlox Carolina</i> . 1 to 3 feet. Bright blue corymbs. Very fine	60	4 00	
" <i>reptans</i> (Creeping Phlox). 3 to 8 in. Bright purple. Showy	50	3 00	20 00
" <i>pilosa</i> . 1 to 1½ ft. Slender stems. Purple	75	5 00	
<i>Phryma leptostachya</i> (Top-Seed). 2 to 3 ft. Purplish plant	50	3 00	
<i>Physostegia Virginiana</i> . 1 to 3 ft. Very showy light purple flowers in racemes	1 00	6 00	
<i>Polygonatum gigantum</i> (Solomon's Seal). 3 to 8 ft. Panicked racemes.	75	5 00	
" <i>biflorum</i> . 1 foot. Curving stems	75	5 00	
<i>Podophyllum peltatum</i> (May Apple). 8 to 16 in. Two large peltate leaves, a single large nodding flower between	40	3 00	20 00
† <i>Potentilla tridentata</i> (Shrubby Cinquefoil). 3 to 8 in.; white flowers.	75	5 00	30 00
<i>Prosartes lanuginosa</i> (Prosartes). 5 to 8 in. Low, forking plant. Single red berries	75	5 00	
† <i>Pyrola rotundifolia</i> (Pyrola). 4 to 10 in. Shiny evergreen leaves, from which rise a raceme of fragrant white flowers	75	5 00	
<i>Rudbeckia fulgida</i> (Cone Flowers). 6 to 18 in. Yellow, black centers. Fall	50	3 00	
<i>Sanguinaria Canadensis</i> (Blood Root). 6 to 10 in. Pure white, showy leaves	75	5 00	30 00
<i>Saxifraga leucanthemifolia</i> . 5 to 15 in. Irregular white flowers, spotted with yellow; bright pink anthers. Fine	75	5 00	30 00
<i>Scutellaria</i> , two varieties. Blue and white	50	3 00	20 00
<i>Sedum telephioides</i> (Orpine). 6 to 10 in. Flesh-colored flowers; thick leaves	1 00	7 00	
<i>Silene Virginica</i> (Fire Pink). 5 to 15 in. Brilliant scarlet	75	5 00	30 00
" <i>stellata</i> . 1 to 3 ft. Pure white. Flowers fimbriate	75	5 00	30 00
† <i>Shortia galacifolia</i> (Shortia). 4 to 8 in. One of our best introductions. From its clusters of large, veiny orbicular leaves, the single flower stems rise, each bearing a large solitary white or pinkish flower with crimped petals and purplish center; forces readily	1 00	6 00	45 00
<i>Silphium laciniatum</i> . 6 to 8 ft. Large leaves, cut serrate. Yellow	1 00		
<i>Sisyrinchium Bermudianum</i> . (Blue-eyed Grass.) 4 to 12 in. Pretty blue flowers all summer	50	3 00	20 00
<i>Smilacina racemosa</i> (False Spikenard). 1 to 3 ft. Flowers terminal, white. Berries speckled	75	5 00	30 00
<i>Solidago</i> in variety. 1 to 6 ft. All shades of yellow. Fall bloomer.	50	4 00	20 00
<i>Stenanthium angustifolium</i> . 1 to 3 ft. Beautiful white panicles. Sept.	1 00	7 00	
<i>Streptopus roseus</i> (Twisted Stalk). 5 to 10 in. Bright rose colored nodding flowers	75	5 00	
<i>Stachys aspera</i> . 8 to 16 in. Terminal racemes. Purple	50	3 00	
<i>Thermopsis Caroliniana</i> . 2 to 5 ft. Handsome divided leaves and long, terminal racemes of brilliant yellow flowers. Fine plant	75	5 00	40 00
<i>Tradescantia pilosa</i> . 1 to 3 ft. Light blue	50	3 00	20 00
" <i>rosea</i> . 5 to 10 in. Grass-like species. Rose-colored	1 00	6 00	

HARDY NATIVE HERBACEOUS PERENNIALS, continued.

	10	100	1,000
<i>Tradescantia</i> Virginia. 1 to 2 feet. Large blue flowers.	\$1 00		
<i>Trautvetteria</i> palmata. 2 to 3 ft. White. Large-lobed leaves . . .	75	\$5 00	\$30 00
<i>Trillium</i> erectum (Purple Nightshade). 6 to 12 in. <i>Deep purple</i> .			
Large leaves	50	3 00	20 00
" " album. 6 to 12 in. White or yellow var. of last . . .	1 00	6 00	
" discolor. 6 to 12 in. Dark purple, varying into green. . . .	1 00	6 00	40 00
" erythrocarpum (Painted Trillium). 4 to 12 in. White, purple centers	50	3 00	20 00
<i>Trillium</i> grandiflorum (Great White Trillium). 5 to 15 in. White flowers, 2 to 3 in. across, turning pink	50	3 00	20 00
" recurvatum. 5 to 10 in. Dark purple.	1 00		
" stylosum. 5 to 15 in. Large, wavy petals of beautiful pink. sessile. 5 to 12 in. Leaves sessile. Purple	75	5 00	35 00
<i>Thalictrum</i> dioicum (Meadow Rue). 2 to 4 ft. Finely cut leaves, and pretty <i>brown, filmy</i> flowers	1 00	6 00	
<i>Thaspium</i> aureum var. trifoliatum. 9 to 24 inches. Yellow.	50	3 00	15 00
<i>Uvularia</i> perfoliata (Bellwort). 6 to 12 in. Light yellow, drooping flowers	60	4 00	
" sessilifolia. 6 to 12 in. Leaves color bright yellow in fall.	60	4 00	
<i>Veratrum</i> viride (False Hellebore). 3 to 6 ft. Fine, large leaves. <i>Yellowish green flowers</i> in dense panicles	75	5 00	40 00
<i>Verbesina</i> Siegesbeckia. 3 to 8 ft. Bright <i>yellow</i> fall bloomer.	75	5 00	40 00
<i>Vernonia</i> Novboracensis (Iron-Weed). 4 to 8 ft. Brilliant dark purple flowers in terminal clusters; very showy	75	5 00	30 00
† <i>Veronica</i> serpyllifolia. 2 to 4 inches. Creeping. Pretty blue flowers.	75	5 00	20 00
† " " officialis. 2 to 4 in. <i>Pale blue</i> flowers in upright spikes	75	5 00	20 00
Prostrate creeper	75	5 00	20 00
<i>Viola</i> cucullata (Blue Violet). 3 to 6 in. Deep blue violet. Strong-growing	40	2 50	12 00
" primulaefolia (Primrose-leaved Violet). 2 to 4 in. Small white, striped with purple	40	2 50	12 00
" pedata (Bird-foot Violet). 3 to 6 in. <i>Large, blue; handsome,</i> divided leaves	75	5 00	40 00
" striata. 10 to 12 in. Cream colored	75	5 00	40 00
" palmata. 3 to 8 in. Large, palmate leaves. Blue.	75	5 00	40 00
" " var. laciniata. 3 to 8 in. Variety of the last, with <i>beautifully cut</i> leaves	75	5 00	
† <i>Yucca</i> filamentosa (Adam's Needle). 4 to 8 ft. Tropical-looking. Leaves 1 to 3 ft. long, and immense clusters of white flowers.	1 00	7 00	40 00
† " recurvifolia (Recurved-leaved Yucca). 3 to 6 ft. Leaves <i>recurved</i> . Flowers green-white	1 00	7 00	40 00
† <i>Xerophyllum</i> asphodeloides. 1 to 3 ft. Long grass-like leaves, from which rises a tall spike of white flowers	75	4 00	20 00
<i>Zygadenus</i> leimanthoides. 1 to 3 ft. Open panicle 1 foot long, of snowy white flowers. July and August	75	4 00	20 00



GRANDFATHER, FROM S. W.

“Howbeit is there a more delicious air. Sunshine upon the peaks is soaked with rich spice of Balsams; from far below—past Oak and Magnolia—past Tulip-tree, Black Birch and Linden, and forest tribes innumerable—rush of the torrent floats upward on cool fragrance of Scented Crab or Brook Azalea, and mellows in upland dells with perfume of Lily-of-the-Valley and Sweet Shrub.”